

ICIEF Board

The Monthly
Living Guide
for the Itabashi
International
Community

Event

Sports Festival in Tokyo 2013: "Walking" Event – Call for Participants!

As part of the 68th National Athletics Meet to be held in the capital this year for the first time in 54 years, in Itabashi we have chosen to hold a "Walking" event to demonstrate that everybody and anybody can take part in sport. Get to know Itabashi's history and abundant nature while walking on our custom-made walking courses. Participants go at their own pace, following a special course map (Japanese only), so even people who are not used to walking much usually can easily join in.

Date: September 29 (Sun), rain or shine

※Opening ceremony 8:30am (may be partially cancelled in case of rain), rolling start from 9:00

Meeting Point: Azusawa Baseball Ground

Capacity: 800 people (first-come, first-served)

Fee: 400 Yen (inc. insurance) ※Children under school-age free. Please pay your own transport fees.

Bring: Personal items such as lunch, water bottle, raingear, towel etc

To apply: Apply in person at counter or by return postcard with the following information: ①Demosupo "Walking" Application (デモスポウオーキング申込) ②Preferred course ③Address ④Name (inc. furigana) ⑤Age (inc. school grade for elementary school students) ⑥Telephone number (for return postcard, please include return name/address).

Applications must arrive no later than August 30 (Fri). Sports Promotion Section, Sports Events Subsection (City Hall, 7F, counter #3, 〒173-8501)

※For group applications, please list ② to ⑥ for each person

※Applications also accepted electronically via City website

※All participants will receive a Demosupo commemorative medal. Finishers will also receive a completion certificate.

Contact: Sports Promotion Section, Sports Events Subsection ☎ : 03-3579-2652



★A Course

(5km, Azusawa Baseball Ground→Ecopolis Center→Itabashi Bologna Children's Book Hall)
Starting from Azusawa Baseball Ground, go down Maeno Chuo-dori to Ecopolis Center, then go down Fujimi-kaido, heading towards Itabashi Bologna children's Book Hall

★B Course

(11km, A course→Green Hall→Science & Education Hall)
After walking A course, go past Itabashi and Itabashi City Hall to Green Hall, then go down Oyama Happy Road, and walk along Old Kawagoe-kaido, heading towards the Science & Education Hall



★C Course

(16km, B course→Nishidai Chuo-dori Park→Itabashi Art Museum)
After walking B course, go down Tokiwadai-dori to Nishidai Chuo-dori Park, then go through Suisha (Waterwheel) Park and head towards Itabashi Art Museum, the final goal!



Event

Itabashi Historical Museum Exhibits

① Display: 15th Itabashi Traditional Arts & Crafts Exhibition: “Shapes of Wood, Shapes of Glass”

Dates: July 13 (Sat)~September 23 (Mon, national holiday)

Content: An exhibition of works of art made out of wood and glass, two raw materials with completely different qualities. Exhibits on display include wooden sculptures from the Edo period, *netsuke* (miniature sculptures), and traditional Japanese musical instruments, as well as creations by four glass-working artists.



② Old Folk House Annual Event *Otsukimi* (moon-gazing)

A display of traditional moon-gazing decorations handed down in the Akatsuka area in the old folk house in the museum's courtyard.

Dates: September 19 (Thu)~23 (Mon, national holiday)



Cost: ① and ② both FREE

Museum opening hours: 9 : 30~17 : 00 (last entry at 16:30) ※Closed Mon (closed Tues after Mon holidays)

Contact: Itabashi Historical Museum (Akatsuka 5-35-25, ☎ : 03-5998-0081)

Event

International Salon: Friendship Club *Nakama*

The International Salon is a place for interaction between foreign people and Japanese people held once a month by volunteers. Everybody is welcome to participate, so why don't you spend an afternoon with us?

Date: September 14 (Sat) 14:30~16:30

Place: Green Hall, Meeting Room 504 (Sakae-cho 36-1)

Access: 5 min walk from Itabashi Kuyakusho-mae station (Toei Mita line) or Oyama station (Tobu Tojo line)

Cost: 200 Yen (includes refreshments) **To apply:** No application necessary. Just turn up on the day!

Contact: ICIEF International Exchange Section ☎ : 03-3579-2015

We're looking forward to meeting you!



Friendship Club *Nakama* has a homepage! It's full of information about the club's staff and activities.

※Find it by searching for 「フレンドシップクラブ 仲間」 (Friendship Club *Nakama*)

Admin

Itabashi Local Traditional Performing Arts

Itabashi has many local traditional arts which are designated as Intangible Folk Cultural Assets by the nation or the City and carefully maintained by preservation groups. On this occasion we present five of these arts, including a special guest group from Toda City.

Date: August 11 (Sun) 13:00~ (doors open 12:30)

Place: Narimasu Act Hall (Narimasu, 3-11-3-405)

Access: Tobu Tojo Line, Narimasu station (1 min walk from north exit)

Performers: Tokumaru-kitano Shrine Ta-asobi Preservation Group, Daimon Yotsutake Odori Preservation Group, Akatsuka Suwa Shrine Shishimai Preservation Society, Kanda-Style Yayoi-bayashi Preservation Society, Narimasu Sato-kagura Preservation Society, Shimo-toda Sasara Shishimai Preservation Society (special guest)

Capacity: 470 people **Cost:** FREE **To apply:** None necessary. Just turn up! (Entrance may be refused if the venue is full)

Contact: Lifelong Learning Section (Cultural Properties) ☎ : 03-3579-2636



Event

21st Annual Bologna Book Fair in Itabashi!

The Bologna Children's Book Fair is held annually in Bologna in northern Italy. Itabashi organizes an exhibition of the best picture books from countries all over the world from among those donated to Itabashi by the Fair's office.



Time: August 17 (Sat)~August 25 (Sun) 9:00~19:00

※Exhibition closed on 19 August (due to scheduled museum closure)

※(Opens 11:00 August 17, after opening ceremony)

Place: Narimasu Art Gallery (Narimasu 3-13-1)

Access: Tobu Tojo Line, Narimasu station north exit (3 min walk), or Tokyo Metro Yurakucho/Fukutoshin Line, Chikatetsu Narimasu station, Exit #5 (5 min walk)

Cost: FREE Just turn up on the day!

Contact: Itabashi Bologna Children's Book Hall

☎ : 03-3579-2665

Admin

Itabashi City Peace Manifesto Commemorative Project

Itabashi adopted its Peace Manifesto on January 1, 1985, expressing the desire for lasting world peace. Since then, the City has undertaken various projects in order to make the declaration a fruitful endeavor.

The "Peace Art & Atomic Bomb Display" will exhibit the best pictures and posters created on the theme of "War and Peace" by elementary and junior high school students, the leaders of the next generation, as well as photographs and other materials from World War II, including atomic bomb-related photographic materials.

Come with your family to this summer holiday event and make it an opportunity to think together about the meaning of peace.

Time: August 14 (Wed)~August 20 (Tues) 9:00~21:00

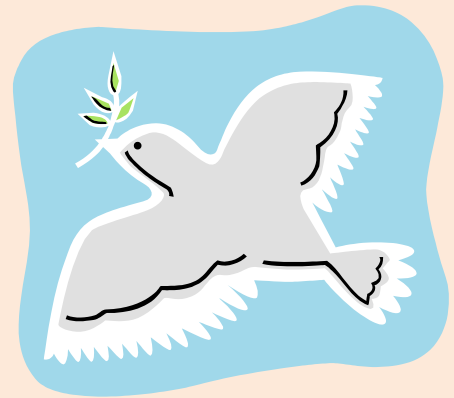
※Display runs for 1 week including Saturday and Sunday

※Opening ceremony will be held on August 14 (Wed) from 10:30am

Place: Akatsuka Branch Office, IF Gallery (Akatsuka 6-38-1)

Contact: Itabashi City Peace Manifesto Commemorative Project Commission Office (c/o General Affairs Section, General Affairs Subsection)

☎ : 03-3579-2052



★Consultation Support Center for Foreign Residents ☎ : 03-3202-5535/03-5155-4039

【Time】 Mon~Fri 9:00~16:00 ※No service every 2nd and 4th Wed 【Languages】 English, Chinese, Spanish, Portuguese

Info

Professional Consultations for Foreign Residents

The Tokyo International Communication Committee (TICC) offers professional consultation for foreign residents at various places in the Tokyo area. Volunteer interpreters and professionals will respond to your legal problems such as visa and resident status, international marriage and divorce, accidents etc; labor problems such as wages and dismissal; health insurance, unemployment insurance, and pensions; education and academic advancement; difficulties with shopping and contracts, housing and so on.

☆For more information on times and venues see the TICC website:

http://www.tokyo-icc.jp/relay_soudan/index.html



Admin

Admission of Foreign National Children to Itabashi Schools

If you wish to enroll a foreign national child in an Itabashi City elementary school, please bring the child's passport and complete enrollment procedures at the Educational Affairs Section.

If you can, please bring someone with you who understands Japanese.

In Itabashi, as a rule, children attend elementary school based on the school district where they live. However, choice of another nearby school may be possible if you have a good reason. If you wish to change the choice of school, please ask when you apply.

- **Eligible to start school in 2014:** Children born from April 2, 2007 to April 1, 2008
- **Application period:** August 26 to October 17, 2013

Monday~Friday 9:00~12:00, 13:00~17:00



Applications/Contact: Board of Education, Educational Affairs Section (Itabashi City Hall 8F, Counter#2)

☎ : 03-3579-2611

Info

Consultation Service for Foreign Workers

The Tokyo Labor Consultation Center has English and Chinese interpreters on hand for foreign workers to get advice on labor issues. Please see details below. ※Advance appointments are required for in-person consultation.

Language	Center/Office	Day	Time	TEL
English	Iidabashi	Mon~Fri	14:00~16:00	03-3265-6110
	Osaki	Wed		03-3495-6110
	Kokubunji	Wed		042-321-6110
Chinese	Iidabashi	Tues, Wed, Thu	14:00~16:00	03-3265-6110

★Consultation Support Center for Foreign Residents ☎ : 03-3202-5535/03-5155-4039

【Time】 Mon~Fri 9:00~16:00 ※No service every 2nd and 4th Wed 【Languages】 English, Chinese, Spanish, Portuguese