

# ICIEF Board

*The Monthly  
Living Guide  
for the Itabashi  
International  
Community*

## Admin

### Enroll in Approved Nursery Care for April 2014

Applications will be accepted to enter approved public and private nursery care in Itabashi. The necessary documents differ according to household circumstances, so please apply early. **\*\*Applications not accepted by mail\*\***  
You can also get consultation about nursery care entry for children with disabilities.

**Application period:** From November 1 (Fri) to **December 24 (Tues)**

**Place:** Nursery Services Section (City Hall 4F, Counter #10), Shimura and Akatsuka Welfare Offices

◎Intensive Reception

- **【Where】** City Hall Room 601, Shimura and Akatsuka Welfare Offices  
**【When】** Mon-Fri 8:30-17:00, Nov 1 (Fri)-Nov 8 (Fri)

◎Weekend Reception

- **【Where】** City Hall Room 601  
**【When】** Sat-Sun 9:00-17:00, Nov 16-17, Dec 14-15

◎Evening Reception (Tuesday only)

- **【Where】** Nursery Services Section (City Hall 4F, Counter #10)  
**【When】** Tuesdays until 19:00, Nov 5, 12, 19, 26 and Dec 3, 10, 17, 24

※Applications can still be accepted after the deadline as “secondary applications”

However, they will be processed after spaces have been assigned for those submitted before December 24.

※Deadline for submission of additional documents: **December 27 (Fri)**



**Application Forms** will be available as follows:

★**Where:** Nursery Services Section (City Hall 4F, Counter #10); Shimura and Akatsuka Welfare Offices; approved daycare centers; Residents' Offices

★**When:** From October 23 (Wed)

**Contact:** Nursery Services Section, Enrollment Subsection ☎ : 03-3579-2452 Fax : 03-3579-2487

## Event

### 42<sup>nd</sup> Itabashi Citizens Festival

The Citizens Festival, held each year in autumn, is Itabashi's largest festival. This year's theme is **“Welcome to Itabashi, the place in Tokyo I most want to live”**. Various events, such as parades and dances, will be staged in the street in front of Green Hall.

**Date:** October 19 (Sat) 11:30-18:00 (Festival Plaza 12:30-16:30)

October 20 (Sun) 9:00-16:30 (Festival Plaza 10:00-16:30)

**Main events:** Festival Plaza, Shopping & Exchange Plaza, Eco Plaza, Hometown Plaza, Culture Plaza etc.

**Event Space:** Outside and around Green Hall (Itabashi Sakae-cho 36-1)

**Access:** Toei Mita line *Itabashi Kuyakusho-mae* station or Tobu Tojo line *Oyama* station

**Contact:** Lifestyle and Tourism Section ☎ : 03-3579-2251



## Event

### 25<sup>th</sup> Suku Suku Festival: *Eye to Eye, Say Hello! Hand in Hand, High Five!*

Suku Suku Festival is an opportunity for parents and children to have fun together. This year's theme is, "Eye to Eye, Say Hello! Hand in Hand, High Five!". Spend the day enjoying the Game Corner (purchase of game coupons necessary); the Fun Corner, where parents and children can play for free; and the Homemade Treats sales corner. There will also be booths where you can get useful advice on nutrition and parenting lifestyle, plus introductions to the Orange Ribbon Campaign against child cruelty and a presentation session on foster home experiences.

**Date:** November 3 (Sun, national holiday) 10:15-14:15

**Place:** Higashi Itabashi Park (東板橋公園, Itabashi 3-50-1)

※Held in Kanazawa Primary School Gymnasium in case of rain

**Access:** 10 mins from Toei Mita line *Itabashi Kuyakusho-mae* station

**Host:** 25<sup>th</sup> Suku Suku Festival Executive Committee

**Sponsors:** Parenting Circle Exchange Group, Itabashi City



**Contact:** Itabashi Child and Home Support Center ☎ : 03-3579-2656

Meet new people!

## Admin

### Applications for Tokyo Public Housing

Tokyo plans to accept applications for its public housing in early November.

**Eligible Households:** Families, Single Persons, Leased Housing (Young Families, Large Families), Young Families



Details about application period etc. have yet to be decided but will be announced later via *Koho Itabashi*, *Koho Tokyo*, and Tokyo Housing Supply Corporation Recruitment Center's telephone service (☎03-6418-5546) and homepage (<http://www.to-kousya.or.jp/>).

**Contact:** Tokyo Housing Supply Corporation Recruitment Center ☎ : 03-3498-8894  
Itabashi City Housing Policy Section ☎ : 03-3579-2186

## Event

### International Salon: Friendship Club *Nakama*

The International Salon is a place where foreign people and Japanese people can meet and interact held once a month by volunteers. Please come along!

**Date:** November 9 (Sat) 14:30-16:30

**Place:** Green Hall, Room 504 (Sakae-cho 36-1)

**Access:** 5 minute walk from Toei Mita line *Itabashi Kuyakusho-mae* station or Tobu Tojo line *Oyama* station

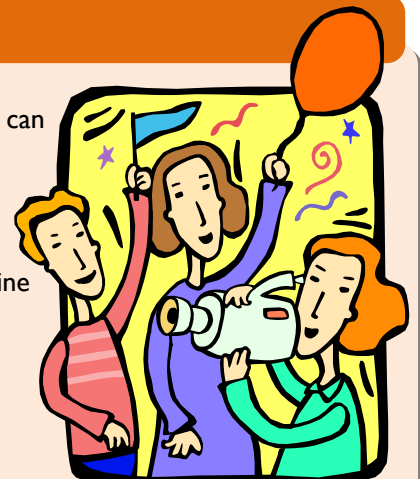
**Cost:** 200 Yen (includes refreshments)

**To Apply:** None necessary. Just turn up on the day!

**Contact:** ICIEF International Exchange Section ☎ : 03-3579-2015

※Friendship Club *Nakama* has a website with information about its staff and activities.

Search for 「フレンドシップクラブ 仲間」 (Friendship Club *Nakama*)



**\*\*Deadline October 7\*\* Autumn Jamboree 2013~International Exchange: Let's go to Yatsugatake!~**

Join us on an international exchange trip by bus to Yatsugatake, Nagano prefecture. Get to know one another more deeply and experience Japan! Overcome the language barrier and savor two full days in the great outdoors colored by autumn foliage. Let's enjoy BBQ, wood-carving workshop, campfire and more!

See ICIEF homepage for how to apply→ <http://www.itabashi-ci.org/>

# Event

## Itabashi Cultural Properties Week

There are 165 registered Cultural Properties in Itabashi, some of which you may see regularly and others which are usually not on public display. In the autumn, which is art and culture season in Japan, Itabashi uses Cultural Properties Week to hold special events where many of these treasures are opened specially to the public.

With the cooperation of the owners, the following tangible properties will be opened for a limited time only with commentary guides.

**To Apply:** None necessary. Just turn up on the day!  
**Cost:** FREE



### 【Itabashi Area】

Place (Guide Station)	Period	Opening Times	Featured Properties
Tokyo Kasei University (Kaga 1-18-1)	Oct 26 (Sat), 27(Sun)	10:00-16:00	<ul style="list-style-type: none"> <li>Watanabe Gakuen Needlework Miniatures Collection</li> <li>Former Tokyo Second Army Armory Complex</li> </ul>
Kanmyoji (Itabashi 3-25-1)	Oct 28 (Mon), Nov 1 (Fri)	10:00-16:00	<ul style="list-style-type: none"> <li>Kanmyoji Fudo Sanzon (three deities) statue</li> </ul>

### 【Akatsuka Area】

Place (Guide Station)	Period	Opening Times	Featured Properties
Former Kasuya Residence (Tokumaru 7-11-1)	Nov 3 (Sun)- Nov 17 (Sun)	10:00-16:00	<ul style="list-style-type: none"> <li>Special opening of Residence interior for limited period</li> </ul>
Shogetsuin (Akatsuka 8-4-9)		10:00-16:00	<ul style="list-style-type: none"> <li>Daido Enmaou (Yamaraja) seated Buddha statue, Daido Amida Nyorai (Amitabha Tathagata) seated Buddha statue</li> <li>Tokugawa Shogunate trade license, Shogetsuin holly tree etc.</li> </ul>
Itabashi Historical Museum (Akatsuka 5-35-25) ※Closed Mon (Open Mon national holiday, closed following Tues)	Oct 12 (Sat)- Dec 1 (Sun) ※Open simultaneously with Museum exhibition	9:30-17:00	<ul style="list-style-type: none"> <li>Ikuko Kasuya family documents (plus Sadao Kasuya family documents)</li> <li>Yasui family documents, Daido bronze bell</li> </ul>

# Event

## 45<sup>th</sup> Itabashi Consumer Living Exhibition

Consumer groups from Itabashi present the results of research on themes that are usefully related to everyday living. Content includes a panel display on consumer life and a quiz rally on the various themes. There are great prizes for participating in the quiz rally and answering the questionnaire, so please come along and bring all your friends. This year's theme is "smart living for the future, our potential power as consumers".

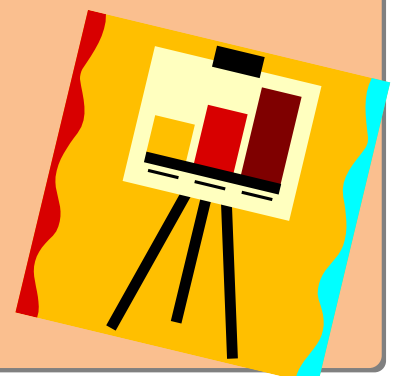
**Date:** October 19 (Sat) 13:00-16:00, 20 (Sun) 10:00-16:00

**Place:** Plaza in front of Itabashi Tax Office (Itabashi, Oyama Higashi-cho 44-8)

※Alongside Yuza Oyama shopping arcade

**Access:** 6 minute walk from Tobu Tojo line Oyama station or  
 7 minute walk from Toei Mita line Itabashi Kuyakusho-mae station

**Contact:** Itabashi City Consumer Center ☎ : 03-3579-2266



No.	Date	Title	Place	Class Format*
		Instructor		Childcare
1	Nov 2 (Sat) 10:00-12:00	Let's ask! Parenting that makes the most of local cultural facilities	Narimasu Social Education Hall	Separate
		Hitoshi Masuyama (Waseda University professor)		Yes †
2	Nov 3 (Sun) 10:00-12:00	Let's find! Your favorite cultural facility	Narimasu Social Education Hall	Separate
		Ecopolis Center, Science and Education Hall, Itabashi Historical Museum, Narimasu Library facility staff		Yes †
3	Nov 9 (Sat) 10:00-12:00	Let's go! Bologna Children's Book Hall ※Includes Book Hall tour and storybook session	Itabashi General Volunteer Center	Together
		Itabashi Bologna Children's Book Hall and Museum staff, I Love This Book Group		No
4	Nov 10 (Sun) 10:00-12:00	Let's create! Itabashi Local Culture Map	Narimasu Social Education Hall	Together (optional separate)
		Hitoshi Masuyama (Waseda University professor)		Yes †

\* Class held with parents and children together or separately † Application necessary

**Target:** Parents/guardians who live, work or attend school in Itabashi with preschool-age children aged 2 or over

**Capacity:** 22 people including children. Plus 10 auditors (solo participation OK) not in the above target group who are interested in this course (Please note Sessions 3 and 4 will include a chance to experience the importance of collaborative childrearing hands-on).

**Cost:** FREE

**To Apply:** Write the following and submit by return postcard or e-mail by October 19 (Sat) to Narimasu Social Education Hall (Narimasu 1-12-4, Itabashi 〒175-0094 E-mail : nsyakyo@city.itabashi.tokyo.jp)

①Family Education Course Application (家庭教育講座申込) ②Address and postcode ③Name (guardian/auditor) with *furigana* (Joint applications for couples OK) ④Name(s) (with *furigana*) and age (years/months) for all accompanying children for Sessions 3 and 4 ⑤Telephone number, E-mail address (Please provide a definite means of contact) ⑥Those who work or attend school in Itabashi, name of company or school

※ If applying by return postcard, clearly write return name and address.

※ Priority for Sessions 3 and 4 will be given to those with accompanying children aged 2 or over.

#### Temporary Childcare:

Available for all sessions except Session 3 (for children from 4 months, by lottery if oversubscribed)

If you wish to apply for childcare, please also write ⑦Name (including *furigana*), DOB and age (years/month), gender of all children requiring childcare when you apply.

**Contact:** Narimasu Social Education Hall ☎ : 03-3975-9706 (Closed every 3rd Monday of the month)

※ If you have difficulty conversing in Japanese, if possible please try to make your application through someone who understands Japanese.