

ICIEF Board

The Monthly
Living Guide
for the Itabashi
International
Community



Free Legal Consultation for Foreign Residents

Experienced lawyers will give expert advice on issues that often affect foreign residents, such as visas, immigration, refugee status, divorce, inheritance, labor, etc. Private consultation available; appointment only.

※Interpreting available; please inquire at time of booking.

Date: • May 21 (Thurs), 2015 13:30~16:00 • June 20, 2015 (Sat) 13:30~16:00
• July 16 (Thurs), 2015 13:30~16:00



Place: Green Hall (Sakae-cho 36-1, Itabashi) **Cost:** FREE (consultation time max. 30 mins per person)

To apply: Apply by email to the below by 3 days before each event. (Emails in Japanese, English or Chinese are accepted)

E-mail: kkouryu@city.itabashi.tokyo.jp

Contact: ICIEF, International Exchange Subsection ☎03-3579-2015



ICIEF Launches Free Mail Magazine!

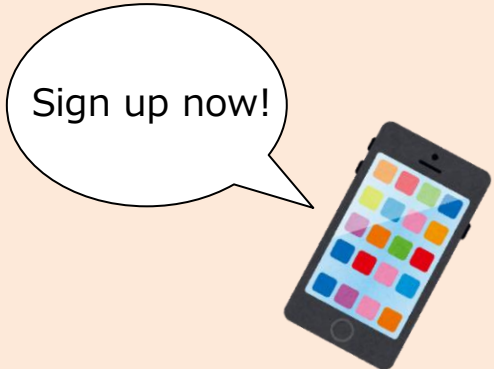
Receive information on international exchange events by ICIEF and events held in Itabashi as well as daily life and administrative information direct to your phone or computer. Information available in 4 languages: Japanese, English, Chinese, and Korean (Hangul). Free subscription service!!

Click here to register → <http://www.itabashi-ci.org/int/mailmagazine/>

アイシェフ (ICIEF) ボード メールマガジン
ICIEF Board Mail Magazine
国際交流月刊 郵便杂志
아이셰프보드 이메일 소식지 등록



今すぐメルマガ登録
Register Now
现在登录邮件杂志
바로 이메일 소식지 등록



Contact: ICIEF, International Exchange Subsection ☎03-3579-2015



Have you completed the switchover to Residence Card?

Permanent residents must also apply to switch over from the old Alien Registration Card to the new Residence Card by July 8, 2015. You can complete procedures at the Regional Immigration Bureau.

For details, contact the General Information Center for Foreign Residents (weekdays 8:30 ~ 17:15 ☎0570-013-904 / 03-5796-7112 (from IP or PHS)).

※Special Permanent Residents should complete procedures at City Hall.

Contact: Resident Register Subsection, Family Registration Section ☎03-3579-2543



You can get a booklet for free introducing all the projects and events etc. being carried out by Itabashi City between April and September divided into 8 different areas.

The booklet is available from the places below; alternatively it can be viewed on Itabashi City's homepage.

It features information on a variety of projects and events, from academic seminars on personal computing to recreational activities such as music concerts, as well as projects and events aimed at children. Take a look!

《Areas Covered》

- | | |
|--|---------------------------------|
| (1) Computing | (2) Culture & Learning |
| (3) Nature & Environment | (4) Health & Living |
| (5) Childbirth & Children | (6) Welfare & Volunteering |
| (7) Foreign Languages & International Exchange | (8) Sports, Events & Recreation |



Available at: Lifelong Learning Section (Itabashi City Hall North Building 6F, Counter #15), all Social Education Halls, Residents' Offices, Regional Centers, public libraries, and Health & Welfare Centers, etc.

Contact: Lifelong Learning Development Subsection, Lifelong Learning Section ☎03-3579-2633

Participants Wanted: Firefly Viewing and Barbeque Evening!



Date: 1 night, 2 days Held twice:

1st time: July 4 (Sat)~5 (Sun), 2015

2nd time: July 11 (Sat)~12 (Sun), 2015

For each time, arrive at Haruna Forest Academy (Haruna-ko-machi 845-1, Takasaki City, Gunma prefecture) by 17:00; event disbands after breakfast the following day.

* In the event of inclement weather, the venue for the BBQ may be moved to an outdoor covered area or the canteen.

Target: Those living, working or studying in Itabashi (those under junior high school age require a chaperone such as parent or guardian)

Accommodation: Haruna Forest Academy

Capacity: 70 people per time (first-served)

Cost: Adult ¥5,400; over 65s ¥5,000; children (4~14 years) ¥3,400; infants (2~3 years) ¥900

To apply/Contact: From May 1 (Fri), directly to Haruna Forest Academy ☎027-374-9315 (open 9:00~17:00)

※Please note, it is not possible to apply for this event by email.



★ Consultation Support Center for Foreign Residents TEL: 03-3202-5535/03-5155-4039

【Time】 Mon~Fri 9:00~16:00 ※No service every 2nd and 4th Wed

【Languages】 English, Chinese, Spanish, Portuguese

●Star-gazing Club

In the first half we will hear an explanation of the highlights of the day's night sky inside the planetarium. In the second half, we will move outside to Peace Park, where we will use telescopes and binoculars to observe the stars with the help of the Hall's astronomy followers (no set ending time; leave when you are ready).

Date: May 23 (Sat) 18:00~ (approx. 90 min) **Place:** Science and Education Hall IF Planetarium, Peace Park

Target: Junior high school and above

●Healing Planetarium: "A Healing Time of Stars and Scents"

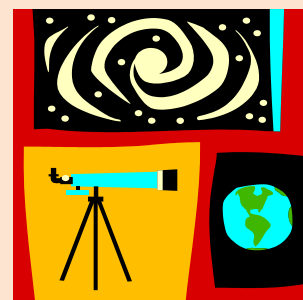
A therapeutic program where you can enjoy a relaxing talk accompanied by a variety of scents under the starry sky. Free complementary scented bookmark!

※Not recommended for those with a particularly sensitive sense of smell.

Date: May 30 (Sat) 18:00~ **Place:** Science and Education Hall IF planetarium

Target: Junior high school and above (elementary school pupils require a chaperone such as parent or guardian)

Cost: Adult ¥350, children ¥120 (tickets go on sale at 17:45 from the ticket-vending machine next to reception).



●Planetarium Film Screening: "Into the Storm" (Japanese dubbed version)

Date: June 13 (Sat) 17:30~ **Place:** Science and Education Hall IF planetarium

Target: Junior high and above (elementary school pupils require a chaperone such as parent or guardian)

Cost: ¥500 (free seating) **Capacity:** 100 people (first-served)

To apply: May 11 (Sat) Reservations accepted from 9:00~

Book by calling ☎03-3559-6561 or e-mailing itakk@itbs-sem.jp with your name and the number of tickets.

(You can also collect your tickets on the day of the show. Tickets can be purchased from reception on IF.)

Contact: Itabashi Science and Education Hall (Tokiwadai 4-14-1, Itabashi 〒174-0071) ☎03-3559-6561

E-mail: itakk@itbs-sem.jp (See the Science and Education Hall's homepage for details: <http://www.itbs-sem.jp>)

Japanese Archery Lessons

「Wakyu」 is the ancient Japanese martial art of archery using a bow and arrow to shoot at a target tens of meters away. Simple and approachable, it is ideal for people of any age, gender, or level of experience. Train your body and mind by becoming one with the bow and the target. A detailed schedule will be announced in *Koho Itabashi* newsletter.

Date: 6 days in June, Evening class 18:00~

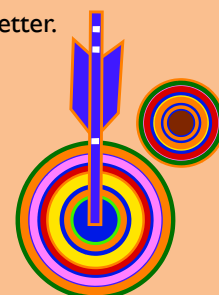
Place: Japanese archery range (Azusawa 3-1-1)

Access: 5 min walk from either Shimura-sakaue station, Toei subway Mita Line, or "Shimura Sakaue" bus stop, Kokusai Kogyo bus (bus lke 21 route, Takashimadaira station to Ikebukuro west exit)

Capacity: 30 people **Target:** Those above junior high school age living, working or studying in Itabashi

Cost: Adult ¥4,000, junior high school ¥2,000 ※A separate facility usage fee of ¥310 (junior high ¥100) is required.

Contact: Azusawa Gymnasium (☎03-3969-4166)



It's nearly Golden Week! What do you have planned for your days off (if you're lucky enough to have some!)?

The International Exchange Salon is a place where people can meet and interact freely over a cup of tea held once a month by the volunteer group *Nakama*. Experience Japanese and world culture, make new friends, and practice using foreign languages you've learned. Please drop by! We look forward to welcoming you.



Time/Place: 5/9, 6/6, 7/4, 8/1, 9/5 (all Sat) 14:30~16:30

Room 504, Green Hall (Sakae-cho 36-1, Itabashi)

Access: 5 min from Itabashi Kuyakusho-mae station, Toei subway Mita Line or Ohyama station, Tobu Tojo Line

Cost: ¥200 (includes refreshments) No booking necessary, just come directly to the venue on the day!

Contact: ICIEF, International Exchange Subsection ☎03-3579-2015

※Friendship Club *Nakama* has a homepage! It contains lots of information on the club's activities and its members. Find it by searching for "Friendship Club *Nakama*" (「フレンドシップクラブ仲間」)

HP: <http://www.geocities.jp/itabashifriendshipclub/index.html>

Facebook: <https://www.facebook.com/itabashifriendshipclubnakama>

Itabashi Historical Museum: Guide to Exhibitions

Planned Exhibition: "Kokeshi Dolls"

Everyone has surely seen them at least once while in Japan, and they are often to be found decorating people's houses. An exhibition of these familiar figurines, known as *kokeshi* dolls, which originated as local folk toys in the Tohoku Region. Enjoy looking at *kokeshi* dolls in a variety of shapes, colors and sizes.

Period: May 23 (Sat)~July 12 (Sun)

※Closed on Mondays (Tues in case of Mon national holiday)

Closing Times: 9:30~17:00 (Last entry 16:30) FREE entry!

Access: 【Train】 13 min walk from Nishi-Takashimadaira station, Toei Mita line or Shimo-Akatsuka station, Tobu Tojo Line

【Bus】 2 min walk from "Itabashi Art Museum" stop, Kokusai Kogyo bus. Take the bus from outside either

①Narimasu station, Tobu Tojo Line or ②Takashimadaira station, Toei subway Mita Line, as follows:

①From north exit, bus stop no.2, bound for Takashimadaira Sorting Yard via Itabashi Art Museum

②From west exit, bus stop no.2, bound for Narimasu Station North Exit via Itabashi Art Museum

Contact: Itabashi Historical Museum (5-35-25 Akatsuka, ☎03-5998-0081)

Homepage: <http://www.k5.dion.ne.jp/~kyoudo/>



★ Consultation Support Center for Foreign Residents TEL: 03-3202-5535/ 03-5155-4039

【Time】 Mon~Fri 9:00~16:00 ※No service every 2nd and 4th Wed

【Languages】 English, Chinese, Spanish, Portuguese