

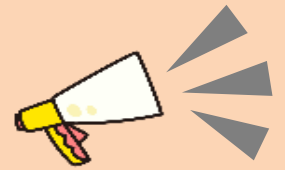
ICIEF Board

① 18th Japanese Speech Festival

Foreign nationals who are currently studying Japanese will deliver speeches about their experiences living in Japan and their cultural observations. This year there are 30 participants from 11 different countries. During intermission there will be a traditional Chinese dance performance. Please come see the participants demonstrate the fruits of their hard work! No reservation is required.

Time: 2/24 (Sat.) 13:00~16:30 (Opens at 12:30)

Place: Itabashi Green Hall 2F Hall (36-1 Sakae-cho)



② American slang seminar

Do you want to improve your English but find it difficult to find opportunities to practice speaking? If so, then this event is for you. At this event you will learn American slang directly from an American. Come join us and let's talk!

Time: 3/11 (Sun) 13:30~15:00

Place: 2F, City Hall South Building, Human Resources Development Center

Fee: ¥200 (Includes cost for snack and tea)

Target: Itabashi residents, students, and commuters with at least elementary English language ability (Must be at least 15 years old)

Capacity: 30 (lottery system)

Contact: Application must arrive by 2/23 (Fri) Apply by sending an e-mail or postcard with the theme of your speech and the following information:① Name of seminar ②Name (in *furigana*) ③Age④Sex⑤Address⑥Phone number⑦E-mail⑧Name of employer or school (if commuter or student)

See you there !



Lecturer: Joachim Muntal

③ Free Legal Consultation Session for Foreign Residents (Reservation Required)



Topics: Visa status, marriage/divorce, refugee status, insurance/pension, inheritance, labor

To apply: Reserve by email or through the homepage at least three days before the session.

In your application, please indicate whether you will need an interpreter.

Time: 2/15(Thu), 3/15(Thu)13:30~16:00 (consultation time is 30 minutes)

④ International Exchange Salon (Friendship Club)

An event organized by volunteers where you can make friends over tea.

Time: 2/3 (Sat) , 3/3 (Sat) 14:30~16:30

Place: Green Hall Room 504 (36-1 Sakaecho)

Fee: ¥200 (includes refreshments) *No reservation required



⑤ Calling for Volunteers (Flexible Timing)

Language volunteers

Some residents of Itabashi City face language barriers in their everyday life.

Language volunteers help these residents by assisting with interpretation and translation.

Compensation will cover transportation costs.



☆☆Activity Details☆☆

Interpretation: Inquiries and procedures at City Hall, meetings at public schools, city-hosted events, etc.

Translation: Translations of application forms, notices, event information, etc.

Intercultural Understanding Volunteer Instructors

We dispatch foreign national instructors to elementary schools in Itabashi in order to promote intercultural exchange and understanding among children. Volunteers introduce their home country's culture, such as dances, music, and games. Compensation will cover transportation costs.



☆☆Activity Details☆☆

Introduce your home country's culture, such as dances, games, music, etc.

(Weekday mornings and afternoons; 1-2 hours)

To register: Fill out the application form on the foundation homepage

<https://www.itabashi-ci.org/int/> and send by e-mail or regular mail.

Contact for ①~⑤:

ICIEF Itabashi Culture & International Exchange Foundation, International Exchange Subsection (inside Culture & International Exchange Section, City Hall, 8F, #13) 2-66-1 Itabashi, Itabashi-ku ☎173-8501 ☎03-3579-2015/FAX 03-3579-2166

Itabashi Master's Entertainment Hall

Live rakugo performances and talks from Taihei of Shoten television fame, the increasingly popular Ichinosuke, the up-and-coming Mikisuke, the young and handsome Wasabi, and Iori.

Time: 3/10 (Sat) Open 13:30 Start 14:00

Place: Itabashi Culture Hall Large Hall

Admission: (Assigned seating)1F ¥3,500, 2F ¥2,500

※Infants cannot attend

Performers: Hayashiya Taihei, Shunputei Ichinosuke, Yanagiya Wasabi, Sanyutei Iori

Ticket reservation: Itabashi Culture Hall Ticket Counter ☎03-3579-5666

HP: <https://www.itabashi-ci.org/cul/events/1415/>

Organizers/Contact: Itabashi Culture & International Exchange Foundation

☎03-3579-3130

~Resident Tax Declaration~

In Japan, mid-February to March 15 each year is resident tax return season.

Your taxes support everything from welfare to education and disaster prevention.

It is important to submit a tax return even if you had no earned income, as your resident tax return is used as a basis for calculating your health insurance premiums and issuing tax exemption certificates.

■ Who needs to submit a tax return...?

- Everybody who was registered as a resident of Itabashi as of January 1, 2018, unless one of the following applies to you.
- You usually submit an income tax return
- Your only income during the previous year was from earned income (i.e. salary) and resident tax is automatically deducted from your salary each month by your employer

■ What to do if you had no earned income...

Fill in the column on the back of the return form for those who had no earned income and submit it.

■ What to bring when submitting your tax return...

Declaration form, seal (stamp style not accepted), documents proving 2017 income (*gensenchoshuyo* or salary slips), documents needed for deductions (life insurance certificate, medical cost related documents, etc.), proof of identification (residence card, etc.), my number card (or my number notification card or copy of residence certificate, etc.)

※Regarding deductions for relatives and family members living abroad

For deductions related to family members or relatives living outside of Japan, submit documentation proving your relationship with the relatives as well as documentation from a financial institution that proves money transfers. Documentation must be translated into Japanese if in foreign language.

■ Where to submit your return form...

Itabashi City Hall North Building 3F Taxation Section

Period: 2/8 (Thu) ~ 3/15 (Thu) 8:30~17:00 ※Excluding Sat/Sun/public holidays

■ Submission by mail

Fill in the relevant sections on the form, enclose the necessary assessment materials and send using the return envelope provided.

Contact • Where to send documents :

Taxation Section (2-66-1 Itabashi, Itabashi-ku 〒173-8501) ☎03-3579-2101



“Ecopolis Flea Market” & “Ecopolis/Handmade Goods



Ecopolis Flea Market

Approximately 40 stores will open up shop to sell various goods. The event is based on 3R, a concept which emphasizes the importance of “Reduce,” “Reuse,” and “Recycle.” Please join us!

Time: 2/18 (Sun) 10:00~13:00 (Will be held even in case of rain)

Place: Ecopolis Center B1



Ecopolis/Handmade Goods Market

Interact with artisans and purchase handmade goods which contain a warmth that can't be found in mass-produced products! Come find something that's for you! There are also booths where you can experience the creative process for yourself.

Time: 3/3 (Sat) 10:00~15:00 (Will be held even in case of rain)

Place: Ecopolis Center B1

Entrance Fee: Free of charge (Charges apply upon purchase of goods or at interactive booths)

Contact: Ecopolis Center 4-6-1 Maeno-cho; Email: info@itbs-ecopo.jp ☎03-5970-5001 (Closed every 3rd Thu)

Science and Education Hall ~Healing Planetarium~

A planetarium based on the theme of “healing.”

Come experience the brilliant vastness of space together with poetry by Michio Mado.

Time: 2/17 (Sat) 18:00~18:50 ※Tickets on sale from 17:30, Open from 17:45

Eligibility: 5th year elementary school students or older

(Elementary school students must be accompanied by a guardian.)

Capacity: 197 (first-come, first-served) ※No reservation required

Cost: ¥350 for adults, ¥120 for high school students or younger

※Discounts are available for senior citizens (65 years or older) or those with disabilities *ID required

Contact: Itabashi Science & Education Hall (4-14-1 Tokiwadai) ☎03-3559-6561

Hours: 9:00~16:30

Closed: Every Monday (following day if Monday is a public holiday) ✉itakk@itbs-sem.jp

※For more details please refer to homepage: <http://www.itbs-sem.jp>



★Consultation Support Center for Foreign Residents TEL: 03-3202-5535/03-5155-4039

【Time】 Mon~Fri 9:00~16:00 ※No service every 2nd and 4th Wed 【Languages】 English, Chinese, Spanish, Portuguese